



# Použití georadaru v silničním stavitelství

Jan Filipovsky, PhD.

Country Manager Roadscanners Central Europe s.r.o.

BEYOND  
THE  
SURFACE

# Měřicí vozidlo Road Doctor Survey Van



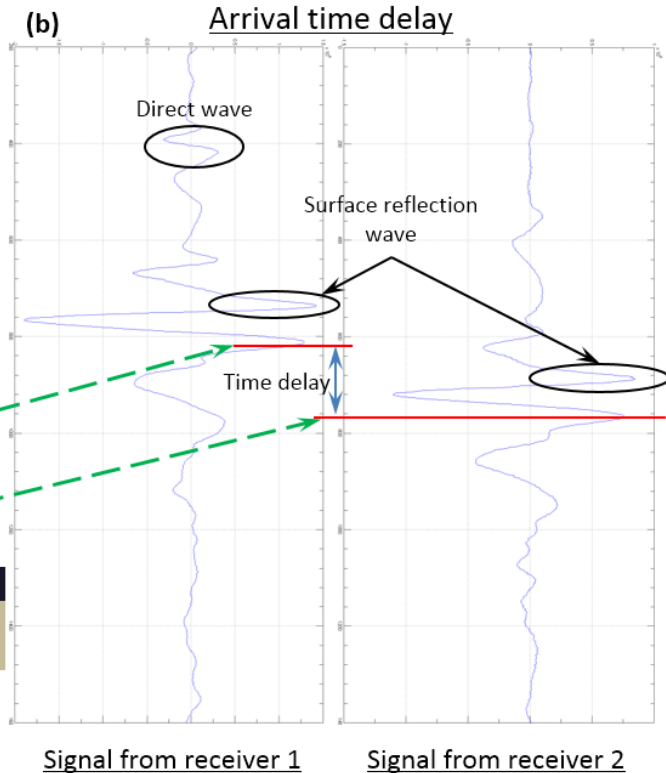
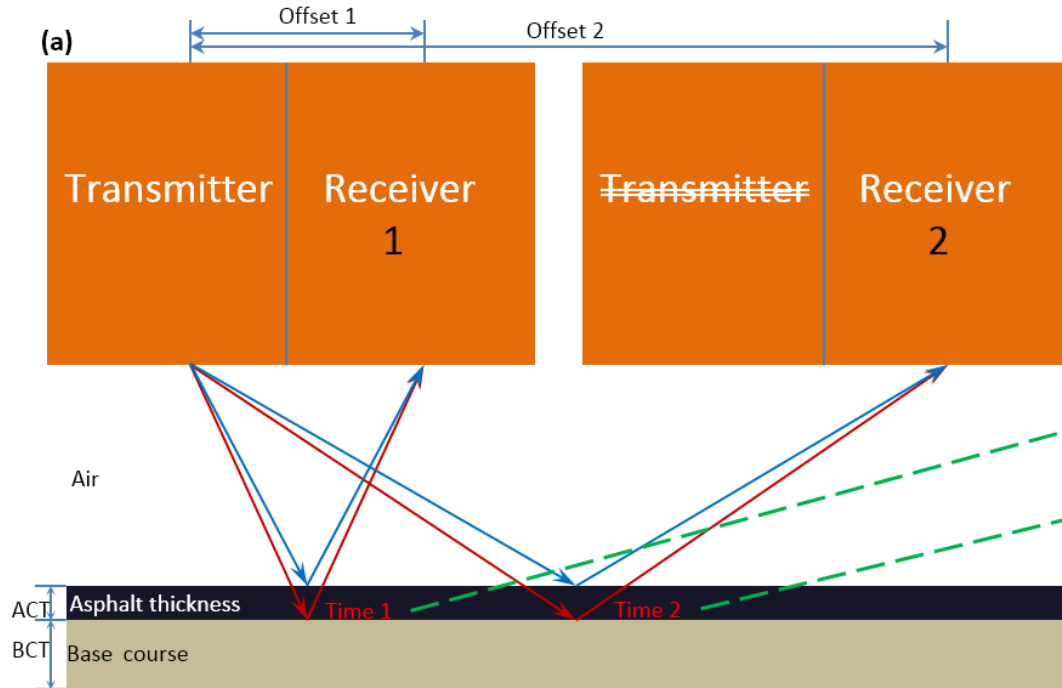
# Měřicí vozidlo Road Doctor Survey Van



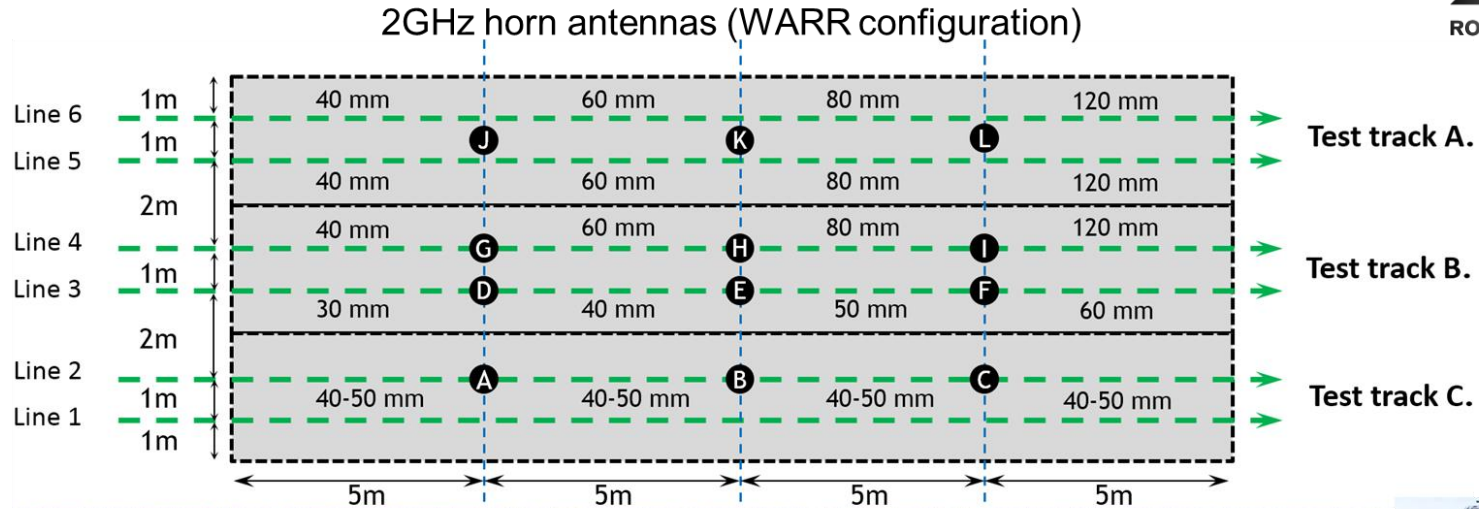
# Road Docto



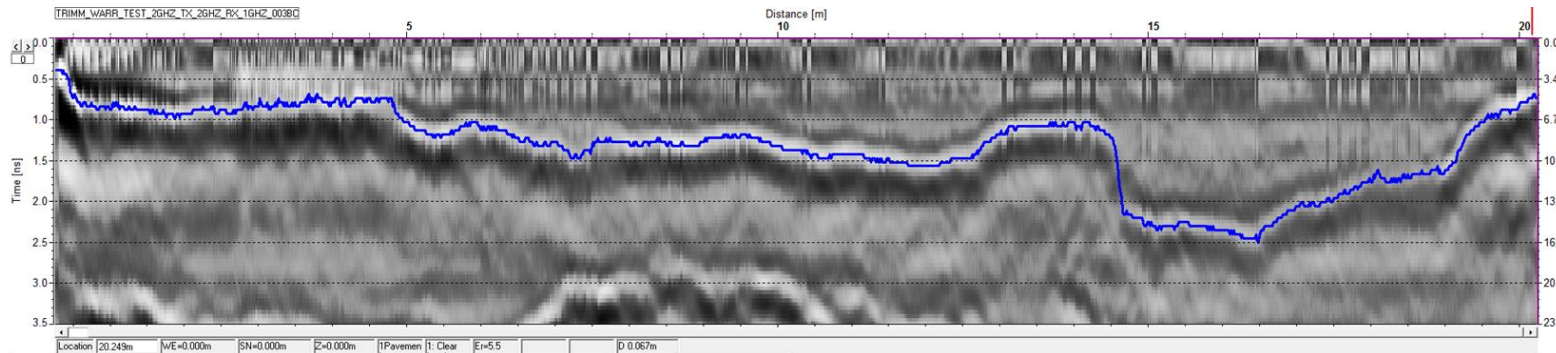
# GPR Air coupled antennas (WARR configuration)



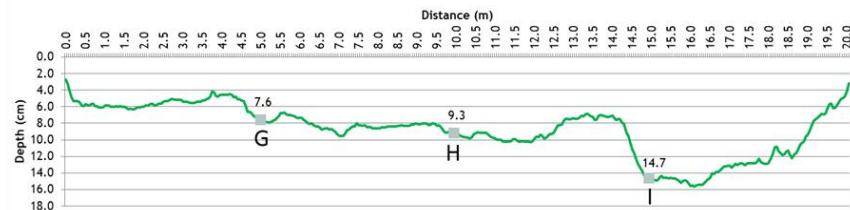
# GPR test – nová tenká AC vrstva



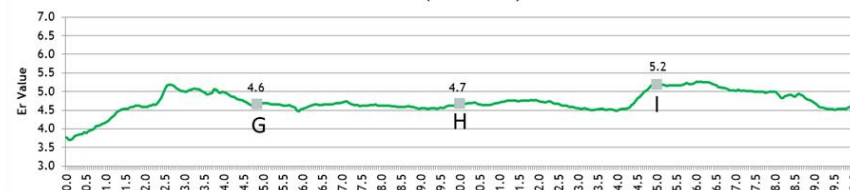
# Výsledky core-less měření a hodnocení



Line 4 (Depth)



Line 4 (Er Value)



7.8cm



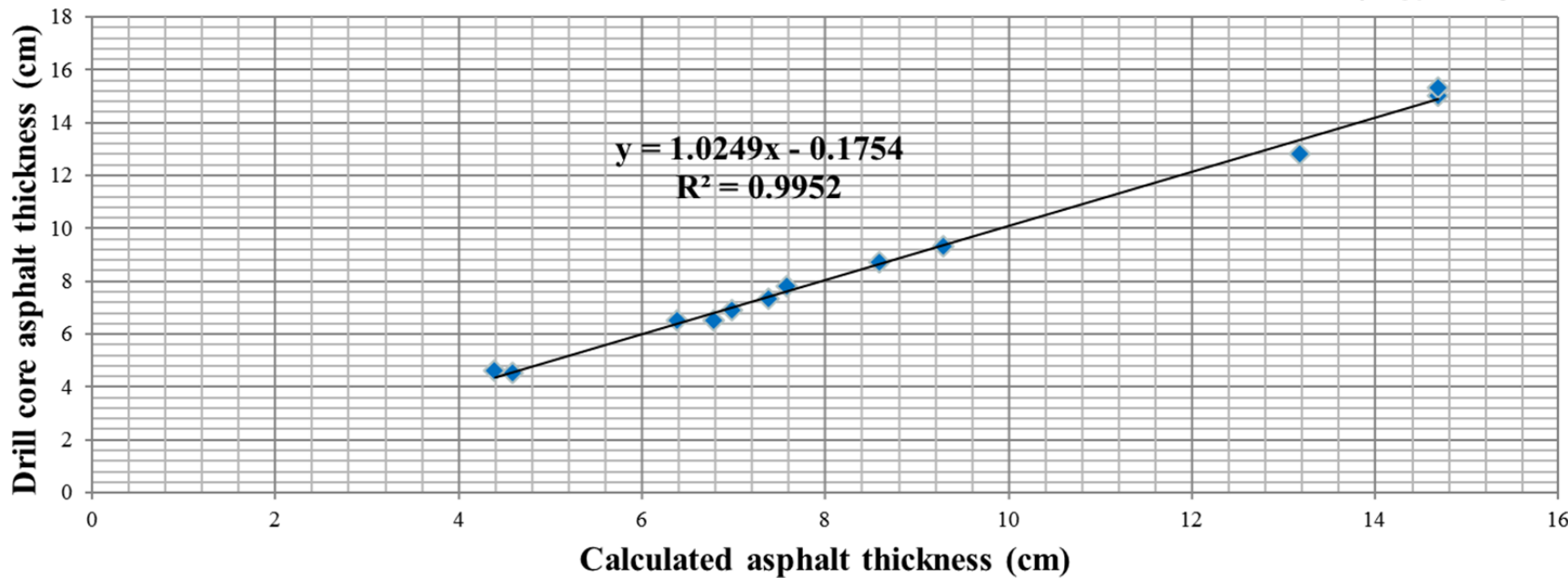
9.3cm



15cm

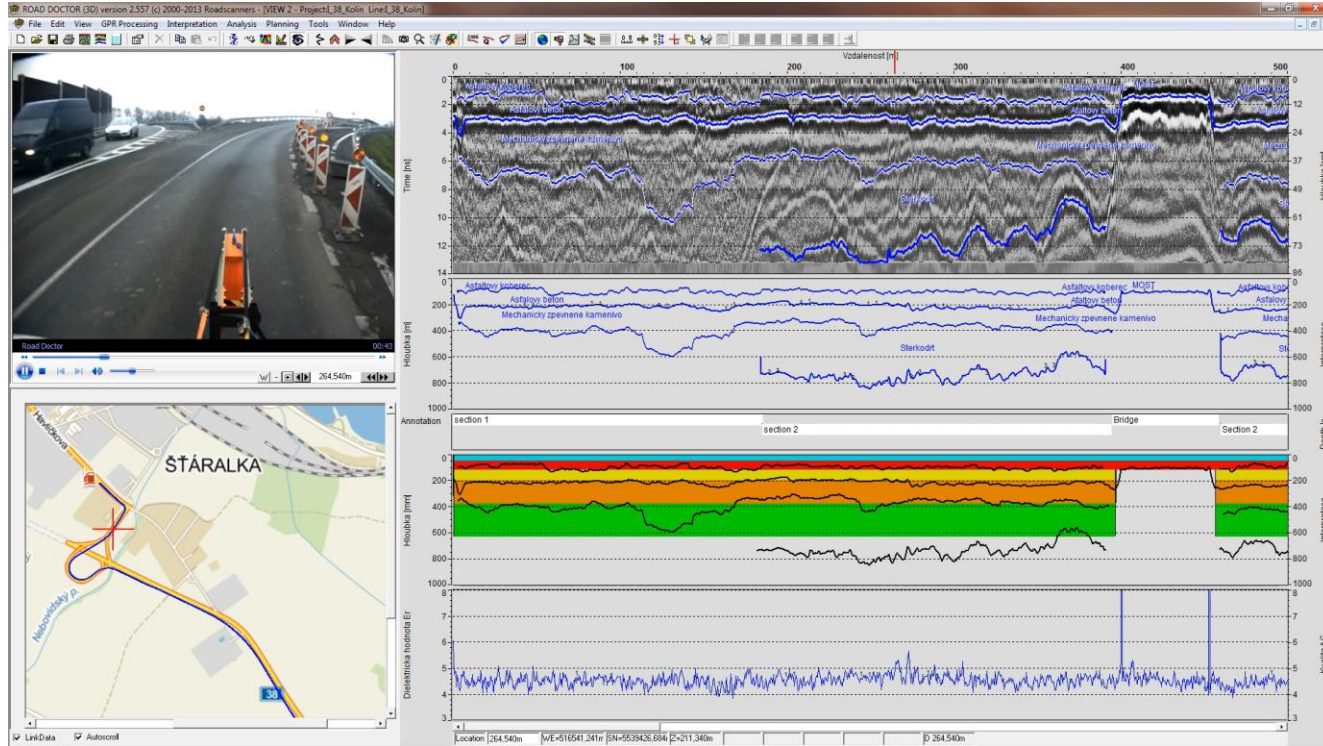


# Výsledky core-less měření a hodnocení

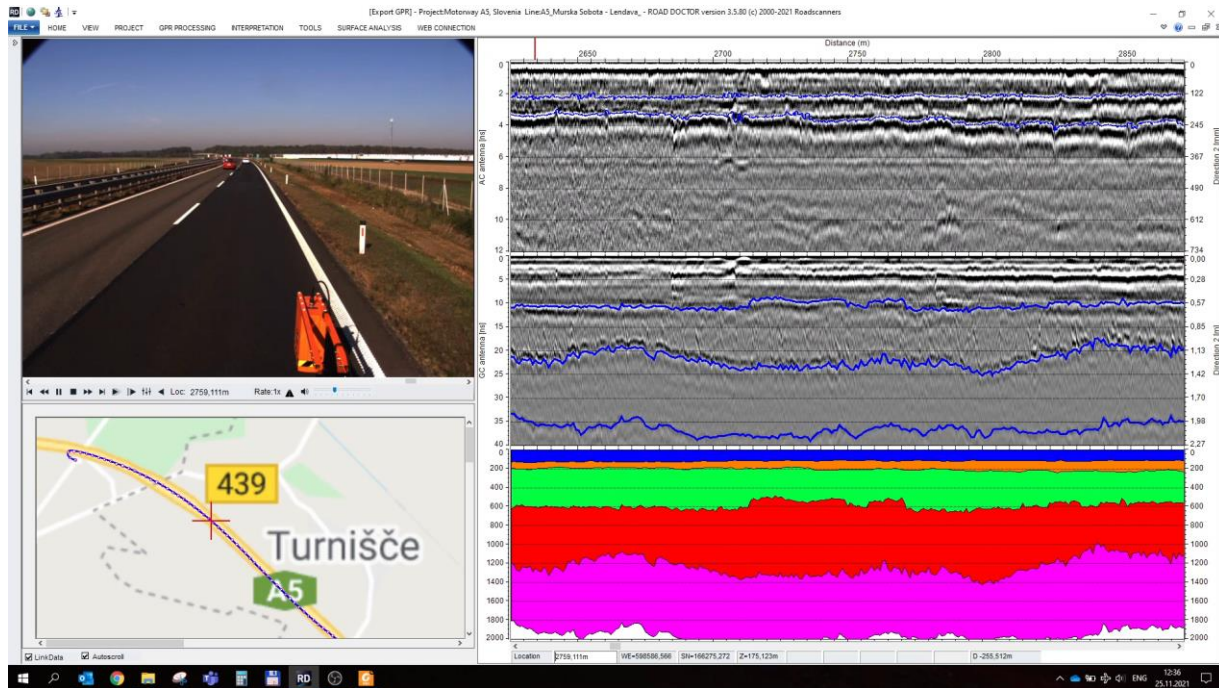




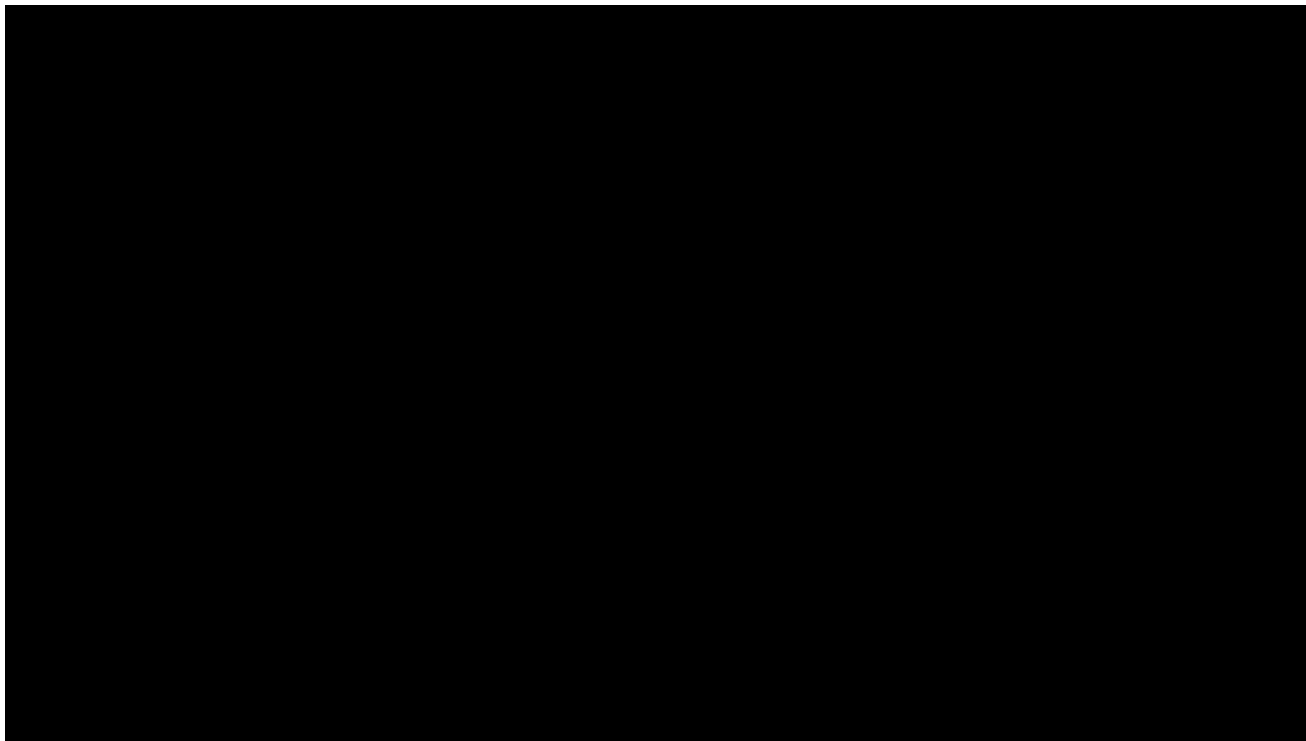
# Kontrola kvality – porovnanie s PD



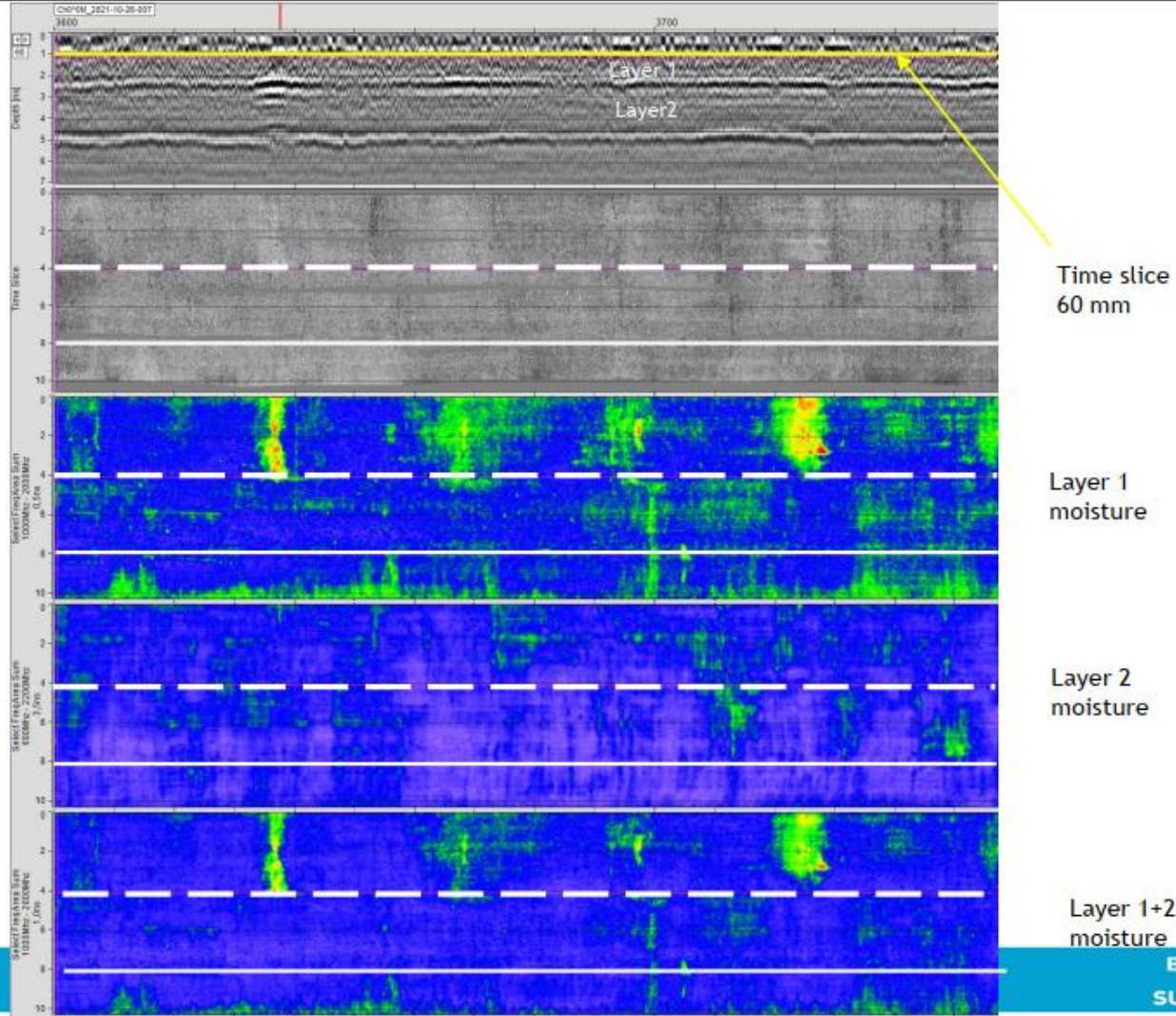
# Vyhodnotenie všetkých viditeľných vrstiev KV

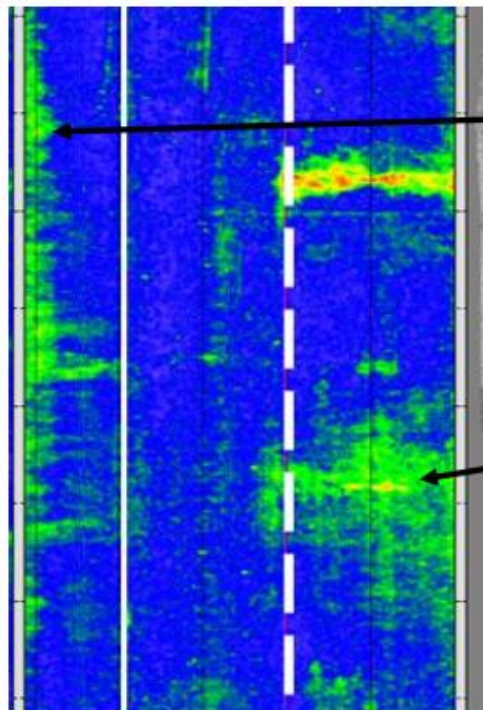


# Analýza vlhkosti v KV (MDI)

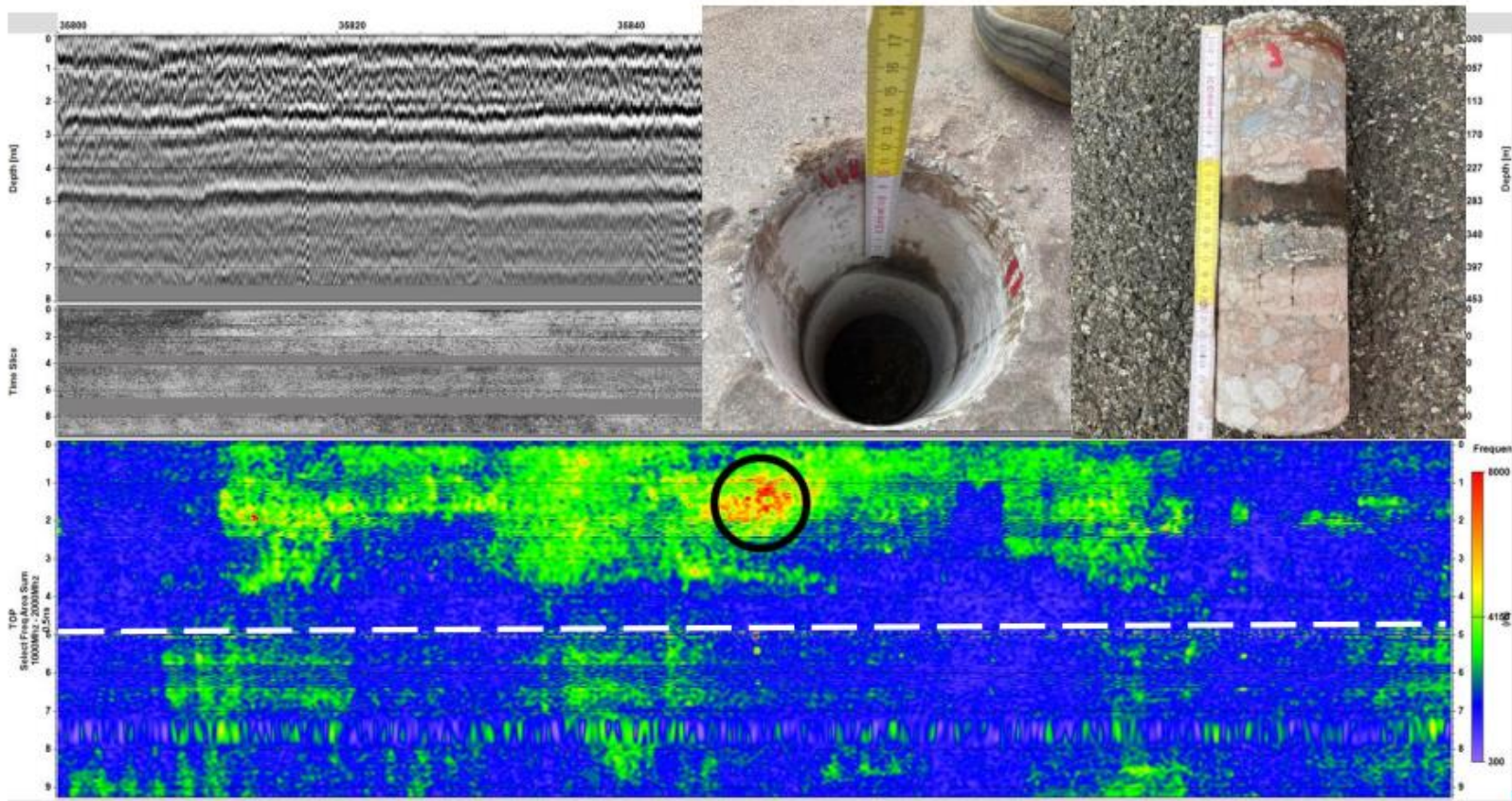


# 3D GPR DATA ANALYSIS AND MOISTURE RELATED PAVEMENT DISTRESS



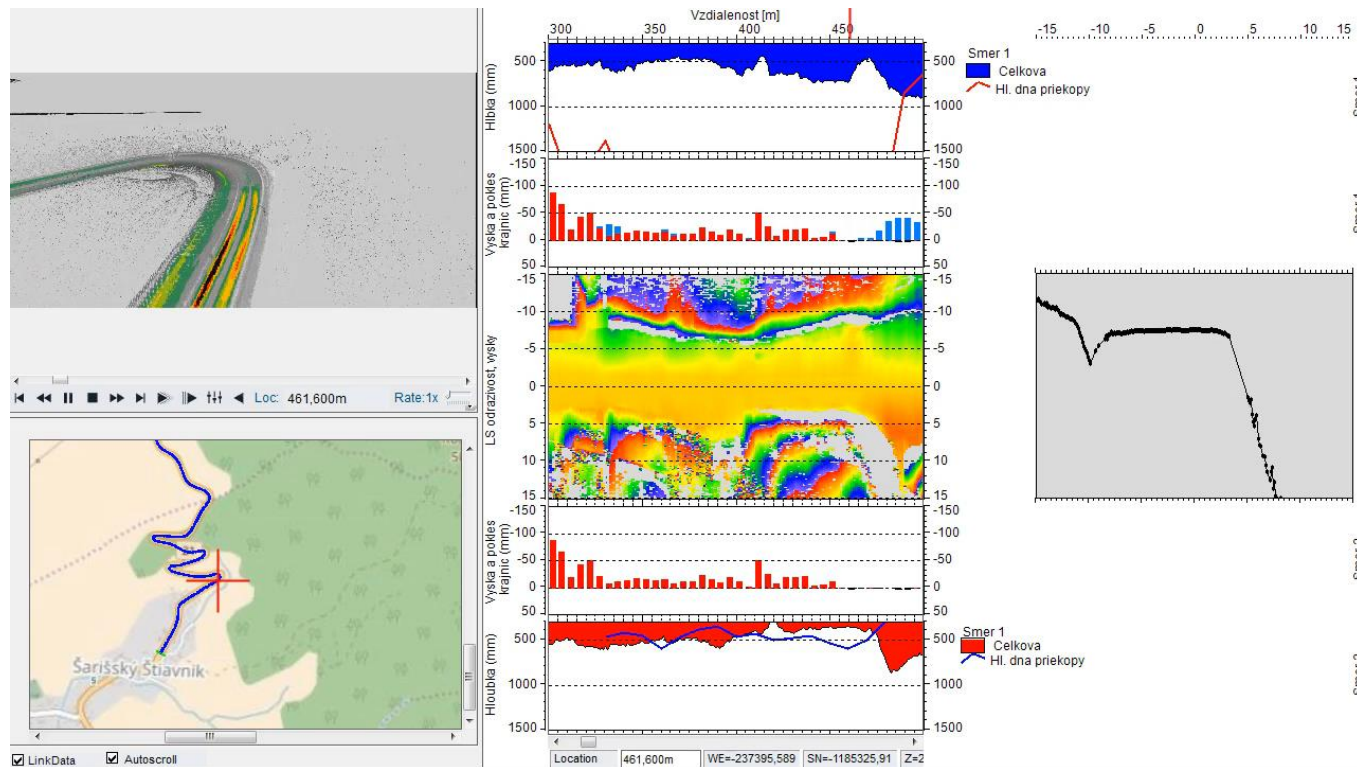


# 3D GPR MOISTURE DAMAGE DIAGNOSTICS

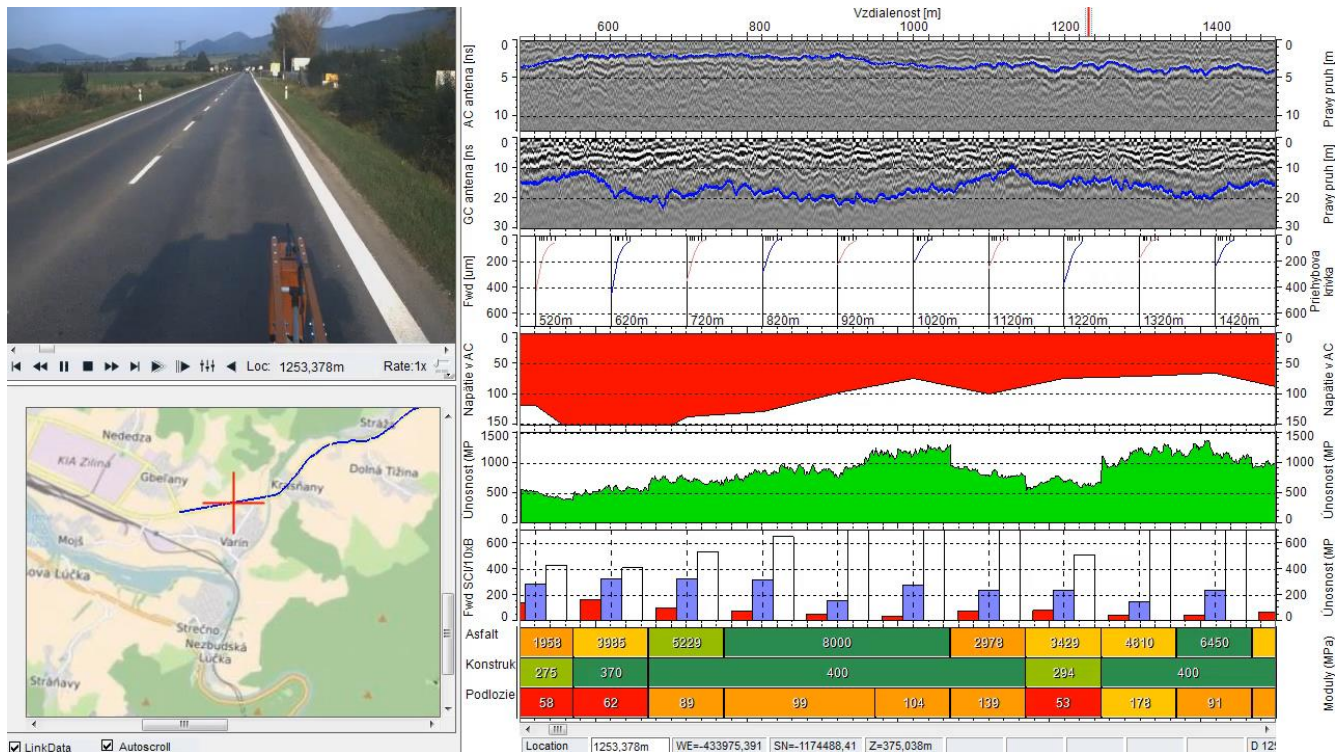


Severe  
moisture

# Použitie GPR + LS pre systém odvodnenia



# Road Doctor možnosti diagnostiky





# 3D GPR System



**CHANNEL SPACING**

75 mm



**DIRECT WAVE SUPPRESSION**

> 50 dB



**FREQUENCY RANGE**

40-3000 MHz



**POLARISATION**

Linear

17cm depth

TOULOUSE AIRPORT\_011\_R5BR

3360

3380

Distance  
147m

3420

3440



Location

1875.900m

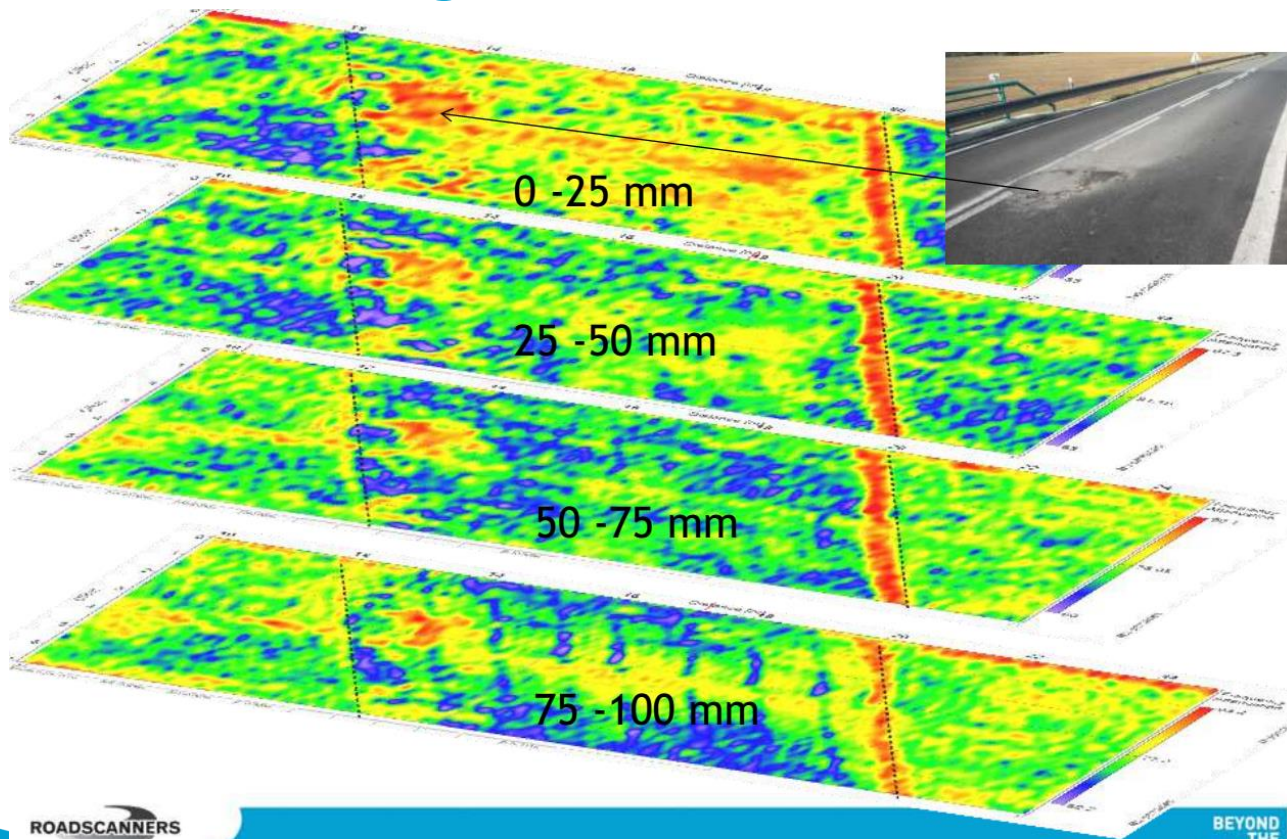
WE=0.000m

SN=0.000m

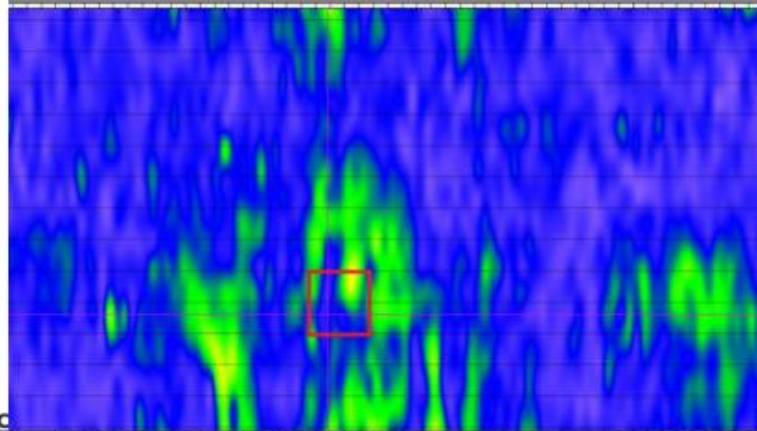
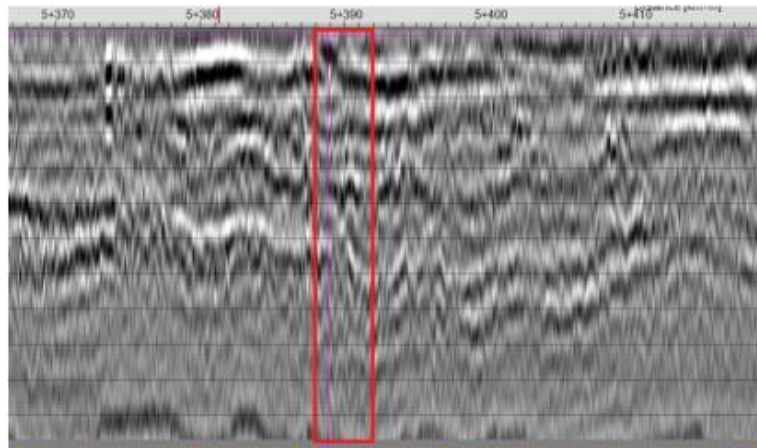
Z=0.000m

D 42.544m

# Nedeštruktívna diagnostika mostov



# Delamination / Stripping Surveys

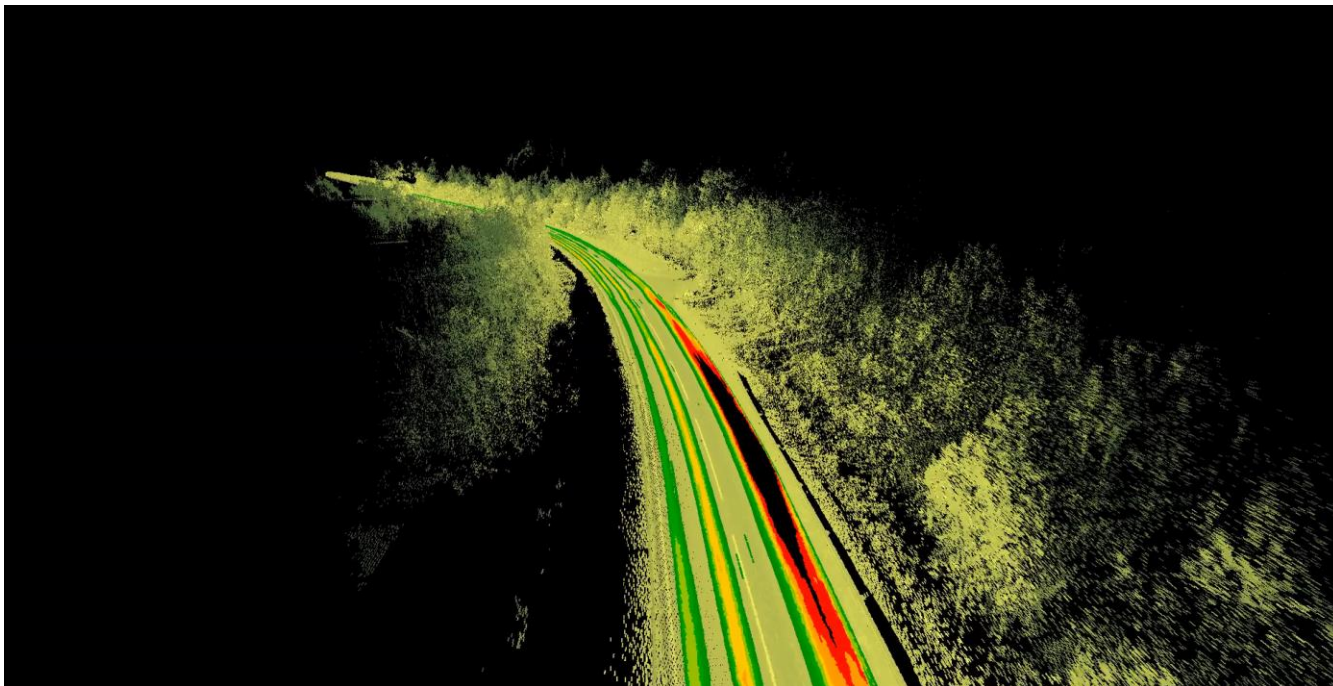


**ROAD MASTERS**  
10000 South US Highway 1  
Maitland, Florida 32751  
Tel: 407.884.1111  
Fax: 407.884.1112  
www.roadmasters.fl

SECTION/STATION	7
DATE	30.10.19
TS	00
AS	0
DEPTH	1
THICK	1
DEPTH	5390
QUALITY	AB
DESCRIPTION	3402 5 1115
SCALE	

roadmasters.fl

# Vizualizácia meraných údajov



# Ďakujem za pozornosť!



BEYOND  
THE  
SURFACE